

The petitioner has provided the Letter of Credit as follows:

Name of Bonding Company: First National Bank and Trust

Letter of Credit Number: 0769749-3475

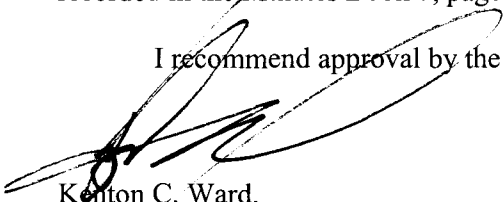
Letter of Credit Date: November 22, 2005

Letter of Credit Amount: \$23,675.00

Letter of Credit Term (1 Year Max): May 9, 2006

This reconstruction of the drain ties into the portion of the Thomas West Arm previously reconstructed per the Surveyor's report to the Drainage Board dated December 17, 2003 as recorded in the Minutes Book 7, page 312 – 313.

I recommend approval by the Board at this time.



Kenton C. Ward,
Hamilton County Surveyor

KCW/llm

HAMILTON COUNTY DRAINAGE BOARD
NOBLESVILLE, INDIANA

IN RE: _____)
Hamilton County, Indiana)

PETITION FOR RELOCATION AND RECONSTRUCTION

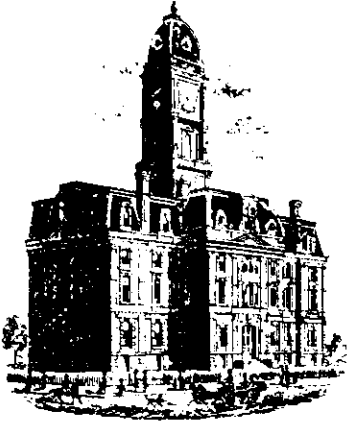
Shamrock Builders (hereinafter "Petitioner"),

hereby petitions the Hamilton County Drainage Board for authority to relocate and improve a section of the Thomas West Arm of the Canal Place Regulated Drain, and in support of said petition advises the Board that:

1. Petitioner owns real estate through which a portion of the Thomas West Arm of the Canal Place Regulated Drain runs.
2. Petitioner plans to develop its real estate with roads, buildings, utilities, storm drains, sanitary sewers and other structures.
3. Petitioner's proposed development of its real estate will require relocation and reconstruction of a portion of the Thomas West Arm of the Canal Place Regulated Drain, as specifically shown on engineering plans and specifications filed with the Hamilton County Surveyor.
4. The work necessary for the proposed relocation and reconstruction will be undertaken at the sole expense of the Petitioner and such work will result in substantial improvement to the Thomas West Arm of the Canal Place Regulated Drain, without cost to other property owners on the watershed of the Thomas West Arm of the Canal Place Regulated Drain.
5. Proposed relocation and reconstruction will not adversely affect other land owners within the drainage shed.
6. Petitioner requests approval of the proposed relocation and reconstruction under IC 36-9-27-52.5.

WHEREFORE, Petitioner requests that an Order issued from the Hamilton County Drainage Board authorizing relocation and reconstruction of the Thomas West Arm of the Canal Place Regulated Drain, in conformance with applicable law and plans and specifications on file with the Hamilton County Surveyor.

Michael E. Hoff
Signed
Michael E. Hoff
Printed



Kenton C. Ward, CFM
Surveyor of Hamilton County
Phone (317) 776-8495

Suite 188
One Hamilton County Square
Noblesville, Indiana 46060-2230
February 11, 2009

To: Hamilton County Drainage Board

Re: Canal Place Drain: Strongbow Gate Sec. 1 Relocation of the Thomas West Drain

Attached are as-builts, certificate of completion & compliance, and other information for Strongbow Gate Sec. 1 Relocation of the Thomas West Drain. An inspection of the drainage facilities for this section has been made and the facilities were found to be complete and acceptable.

During construction, changes were made to the drain, which will alter the plans submitted with my report for this drain-dated December 9, 2005. The report was approved by the Board at the hearing held December 22, 2005. (See Drainage Board Minutes Book 8, Pages 571-572) The changes are as follows:
The 12" RCP is now 74 feet. The open ditch is 135 ft.
The length of the drain due to the changes described above is now **209 feet**.

The non-enforcement was approved by the Board at its meeting on December 22, 2005 and recorded under instrument # 200500084920.

The following sureties were guaranteed by First National Bank and Trust and released by the Board on its May 8, 2006 meeting.

Bond-LC No: 0769749-3475
Insured For: Storm Sewers
Amount: \$23,675.00
Issue Date: November 22, 2005

I recommend the Board approve the drain's construction as complete and acceptable.

Sincerely,



Kenton C. Ward, CFM
Hamilton County Surveyor

KCW/slm

CERTIFICATE OF COMPLETION AND COMPLIANCE

To: Hamilton County Surveyor

Re: *Strongbow Gate, Section 1*
Thomas West Legal Drain

I hereby certify that:

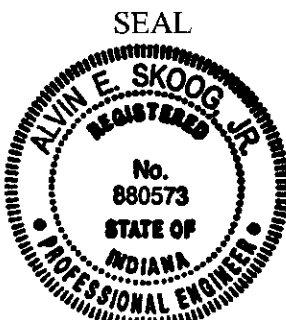
1. I am a Registered Land Surveyor or Engineer in the State of Indiana.
2. I am familiar with the plans and specifications for the above referenced subdivision.
3. I have personally observed and supervised the completion of the drainage facilities for the above referenced subdivision.
4. The drainage facilities within the above referenced subdivision to the best of my knowledge, information and belief have been installed and completed in conformity with all plans and specifications.
5. The drainage facilities within the above referenced subdivision to the best of my knowledge, information and belief have been correctly represented on the Record Drawings, Digital Record Drawings and the Structure Data Spreadsheet.

Signature: *Alvin E. Skoog, Jr.* Date: *3/29/07*

Type or Print Name: *Alvin E. Skoog, Jr.*

Business Address: *13110 Promise Road*
Fishers, IN. 46039

Telephone Number: *(317) 841-3141*



INDIANA REGISTRATION NUMBER

880573

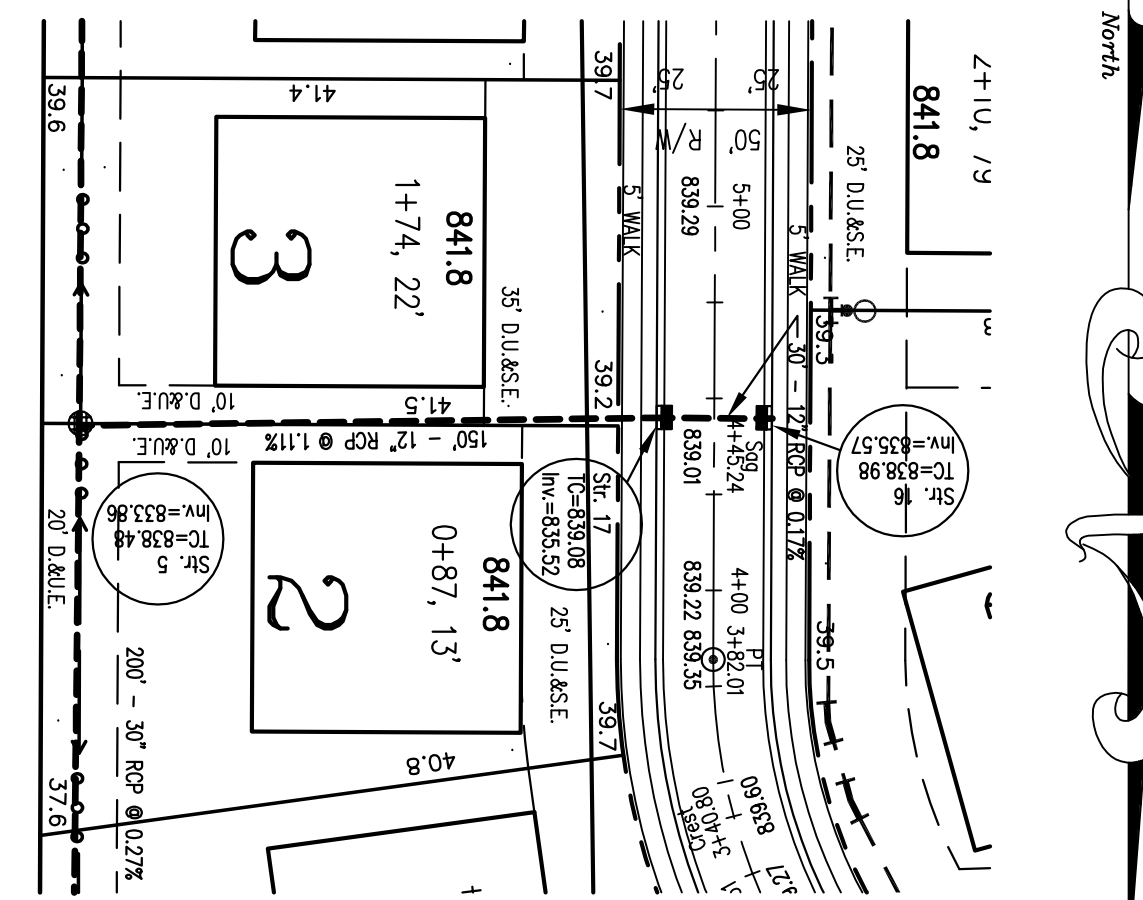
HSE NOTES:

1. Except for force mains, contractor to install concrete cradles when the vertical separation (as measured from the exterior of the pipes) between sanitary sewer facilities and storm sewers is 18" or less.

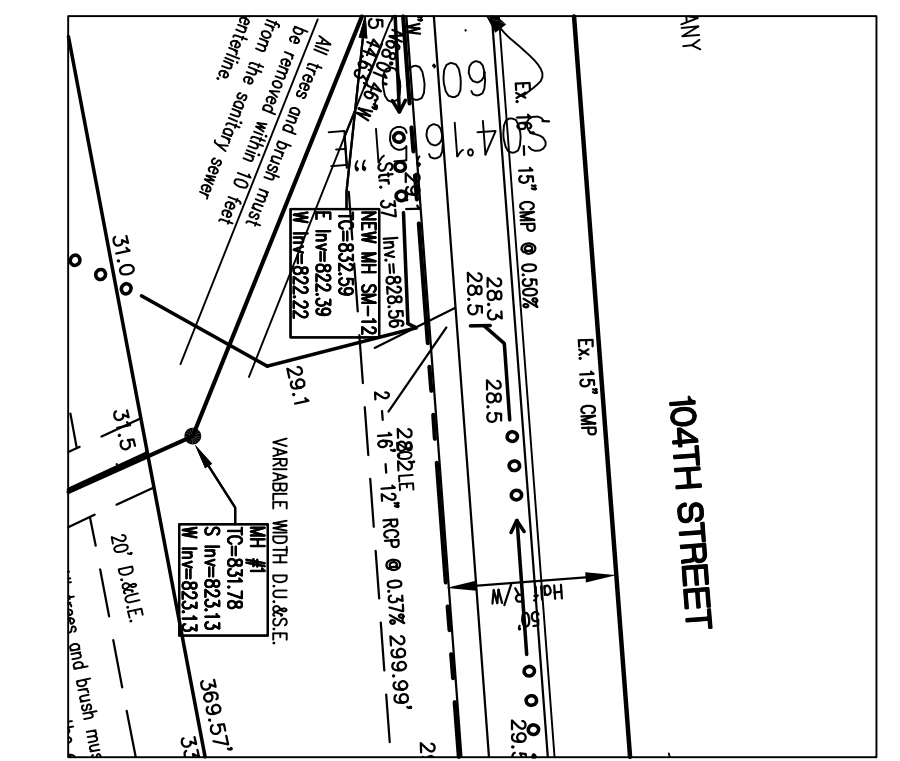
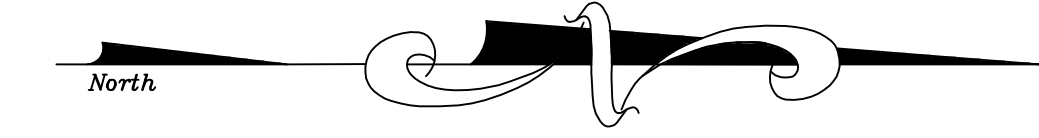
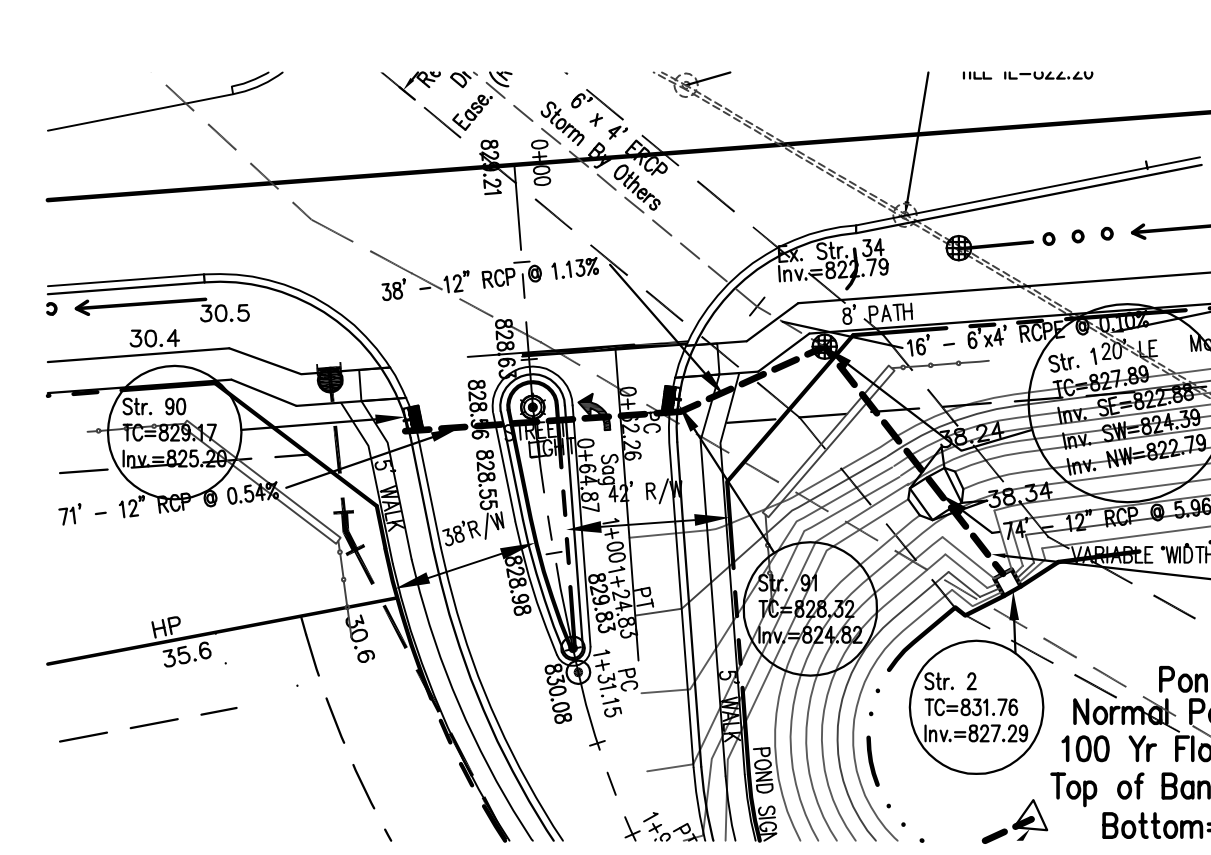
Local Benchmark: HSE 22

HSE disc in concrete set at the 104th St. entrance to Weatherstone on the west side of Saddlestone Drive. 30' W of BC on Saddlestone Drive and 40' N of BC on 104th St. Elev.=837.85 (NAVD 1988)

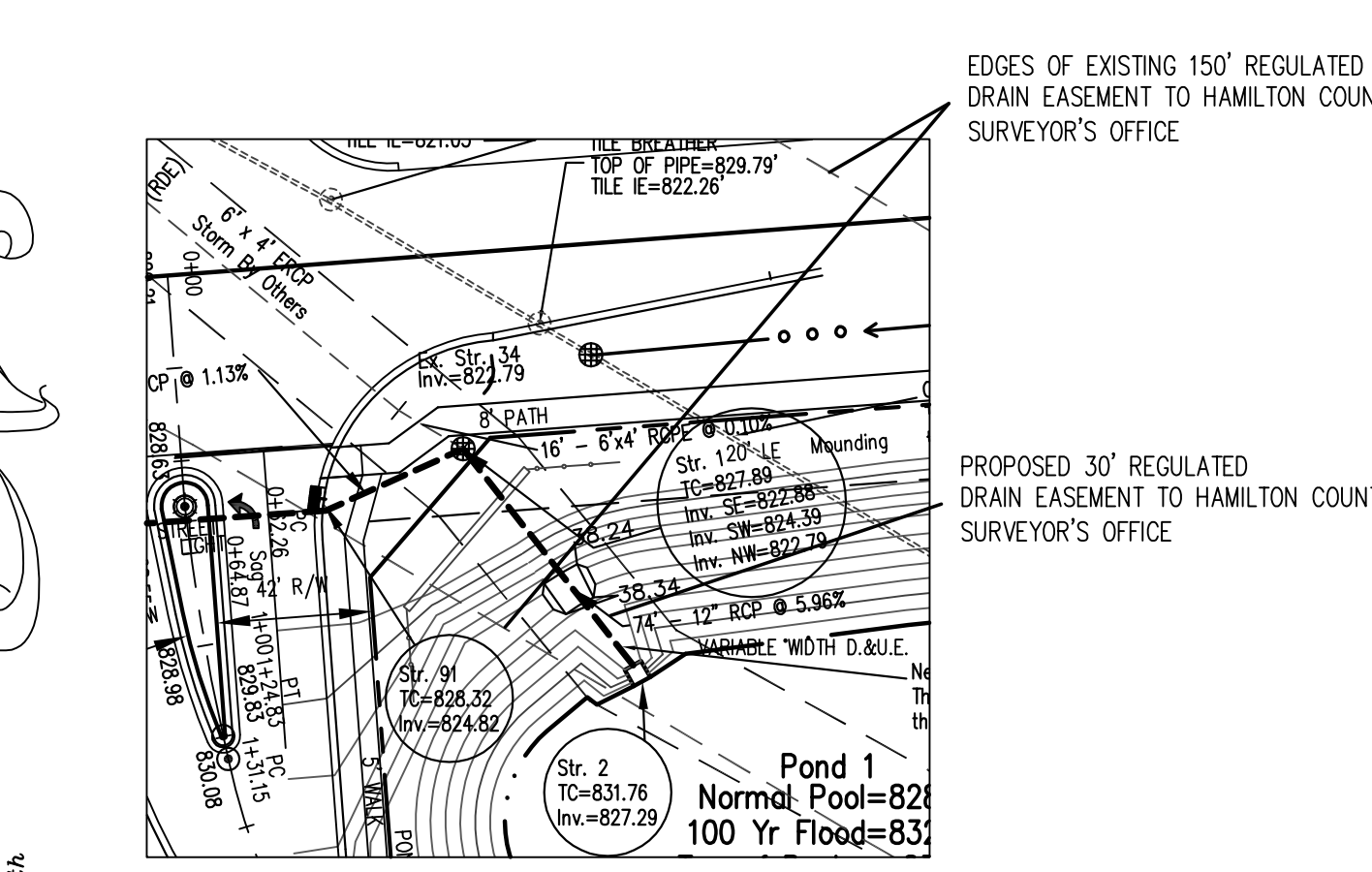
NOTE: PLAN VIEW FROM RECORD DRAWINGS.



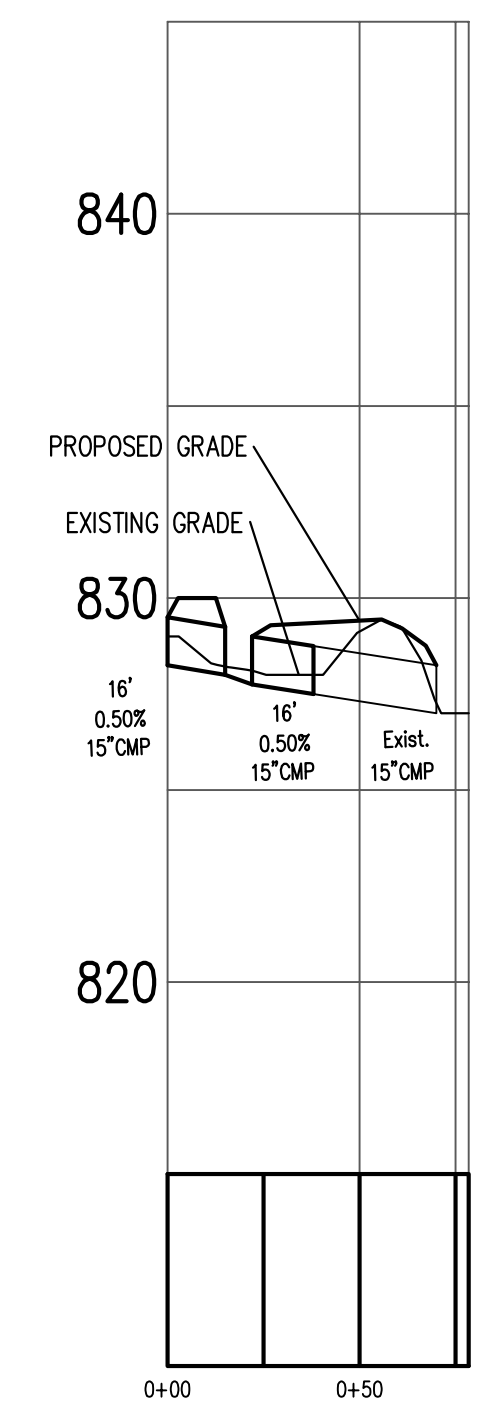
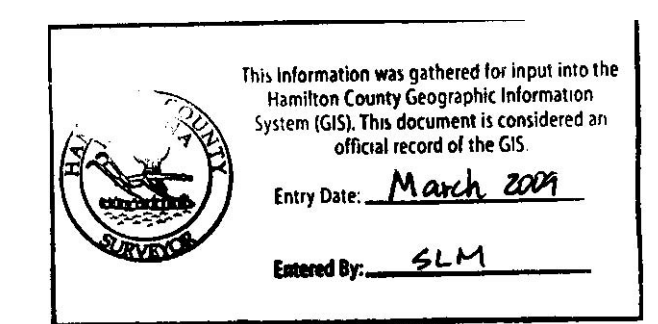
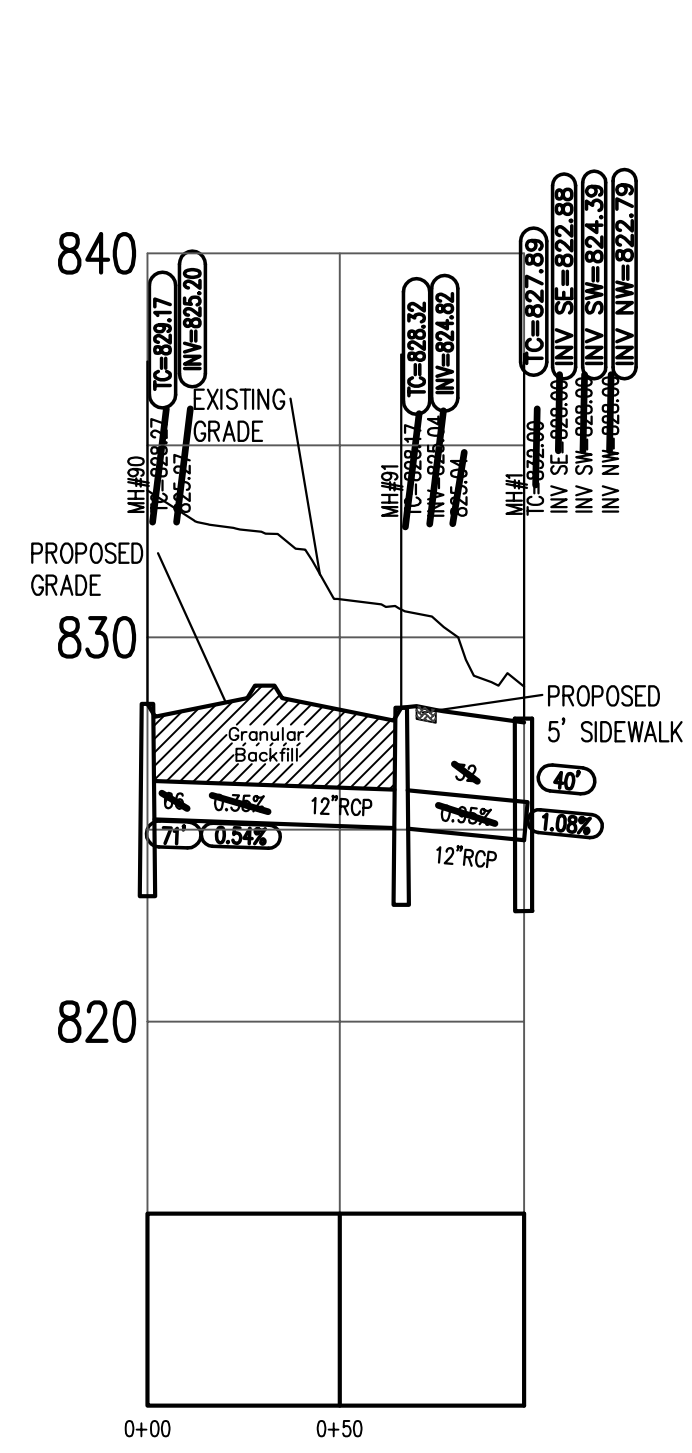
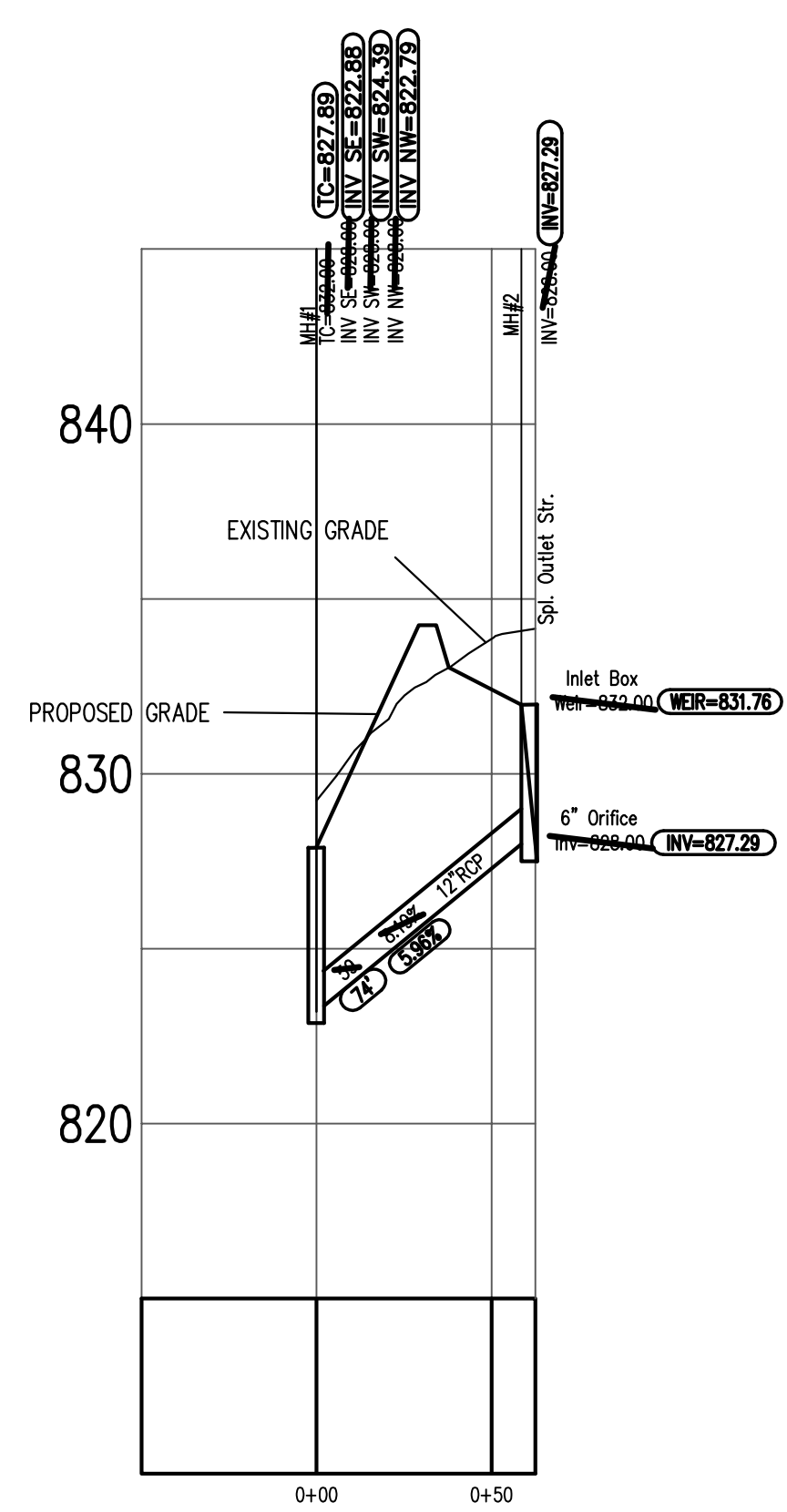
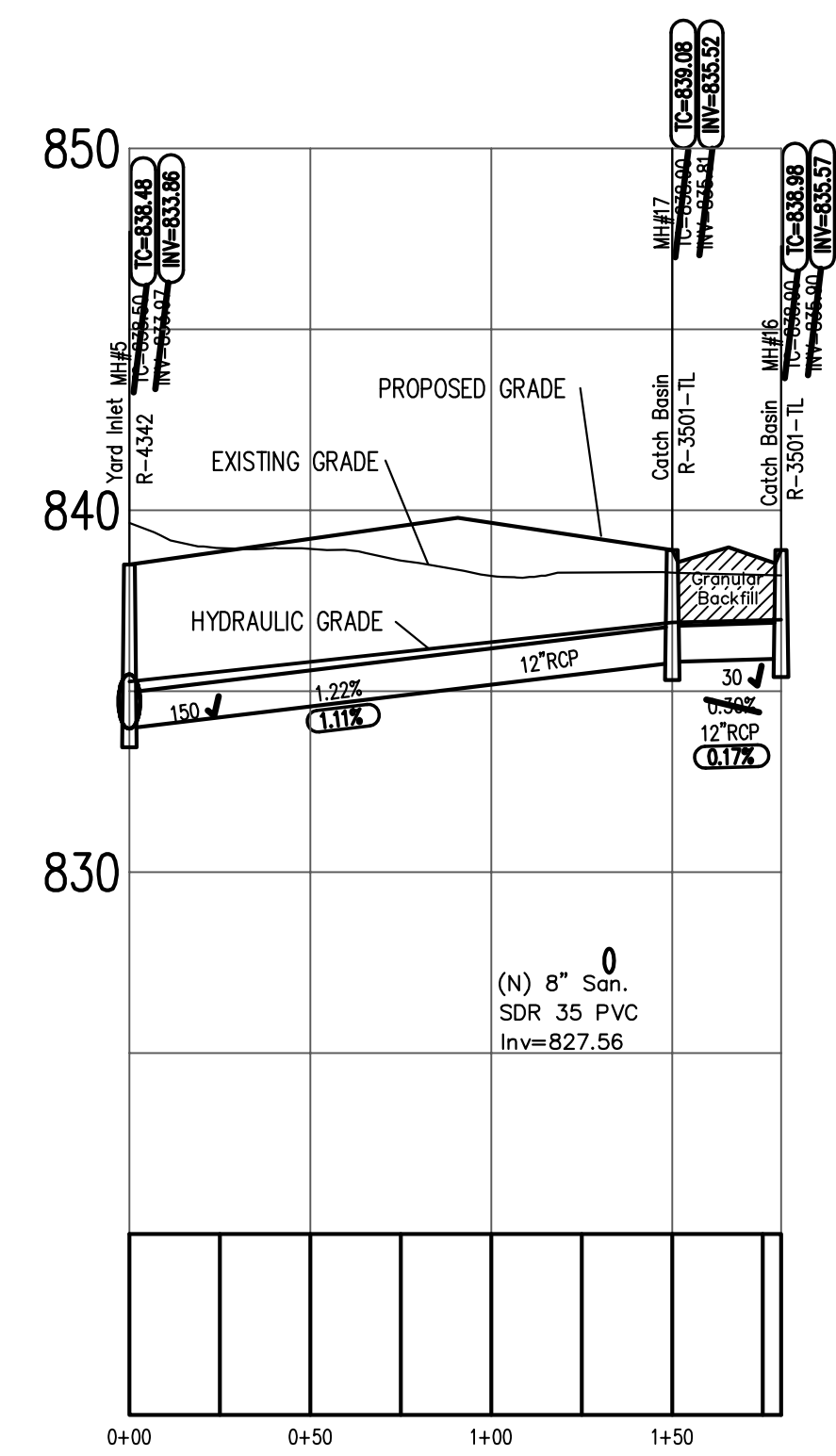
NOTE: PLAN VIEW FROM RECORD DRAWINGS.



NOTE: PLAN VIEW FROM RECORD DRAWINGS.



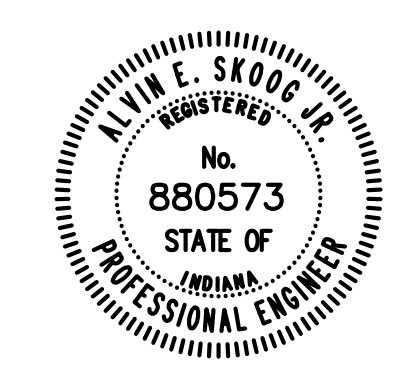
NOTE: PLAN VIEW FROM RECORD DRAWINGS.



- Legend**
- Sanitary Sewer With Manhole and 6" Lateral
 - Storm Sewer with Inlet
 - B.S.L. — Building Setback Line
 - D.U. & S.E. — Drainage, Utility and Sanitary Sewer Easement
 - Handicap Curb Ramp Location (ADA Standards Apply)
 - 4" Concrete Sidewalk
 - Stop Sign
 - TC=838.81 As-Built Information

RECORD DRAWING CERTIFICATION

Certified By: *Alvin E. Skoog*
 Representing Falcon Engineering, Inc.
 I, the above signed, certify that to the best of my professional knowledge, information and belief, the locations, elevations and easements concerning storm and sanitary sewers were performed under my direct supervision.
 NOTE: 1) Slope percentage shown represents a calculated figure. Sanitary sewer lateral connection to the main ("wye" locations) are shown per information from the sewer camera contractor. Sanitary sewer lateral stations and lateral lengths were drawn from the field location of the lateral (provided by the sanitary sewer contractor) to the "wye" per the sewer camera contractor's notes. 2) Pond slopes measured from field survey show three to one (3:1) slopes. 3) All storm sewers and sanitary sewers are located within designated easements.



No.	Date	Revision
1	3/22/07	MH 1 Storm Revisions

falcon ENGINEERING, INC.		"As-Built" Storm Sewer Plan & Profiles Strongbow Gate - Section 1		Date February 1, 2005
13110 Promise Road Phone: (317) 841-3141	Noblesville, IN 46060 Fax: (317) 841-9951	Town of Fishers Design By AES/KMH	Fall Creek Township Drawn By AES/KMH	Hamilton County Checked By AES
Indiana Approved By AES			Job No. 118	Scale 1" = 50' 1" = 5'
			Sheet No. 5 of 7	